



PREMIUM

EXTERIOR

GRIPCRETE
HP ACRYLIC MASONRY HI-BUILD



GREAT PAINT GREAT PEOPLE

SINCE 1956
hallman lindsay
QUALITY PAINTS®

hallmanlindsay.com

HP ACRYLIC MASONRY HI-BUILD

GRIPCRETE HP ACRYLIC MASONRY HI-BUILD is a 100% acrylic exterior high-build coating designed to provide lasting protection and increased application efficiencies. This flexible coating is formulated for weather-proofing masonry surfaces to protect against wind-driven rain. Exceptional resistance to alkali, efflorescence, and dirt pick-up extends the coatings lifecycle and reduces ongoing maintenance. Tolerating a pH of 7-13 allows application directly to fresh concrete without the use of specialty primers helping reduce labor and material costs.

GRIPCRETE HP ACRYLIC MASONRY HI-BUILD is designed for professional application and can be applied to a variety of vertical cementitious surfaces providing both beauty and protection. This product is specifically formulated for tilt-up, poured in place concrete, CMU, split-face, EIFS, stucco and other masonry surfaces requiring protection from the harshest elements.

FEATURES

- Wind-Driven Rain Protection
- Superior Adhesion
- Excellent Color Retention
- Extreme Alkali Resistance

BENEFITS

Superior Protection

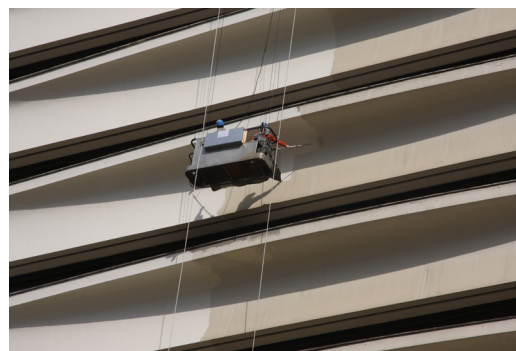
Unique weather-proof coating protects from wind-driven rain while allowing vapor permanence and breathability. The acrylic formula provides a flexible coating with color retention and strong adhesion.

Self-Priming System

Formulated to combat alkali and block efflorescence, this single product system is ideal for tilt-up, poured concrete and masonry exteriors. Two coats required.

System Warranty Available

Upon inspection and pre-application approval, system warranty is available. Some limitations apply. Please consult your Hallman Lindsay representative for details.



TECHNICAL INFORMATION

APPLICATION INFORMATION

Drying Time at 77° F 50% R.H:

To Touch: 4 Hours

Recoat: 24 Hours

* Cooler temperatures and higher relative humidity will extend dry times

Recommended Spreading Rate:

90-100 sq. ft./Gal to achieve
14-18 mils WFT; 6.45-8.3 mils DFT

Solids Content:

Volume: 47% ± 2 Weight: 62% ± 2

BASES: WHITE - 168 SERIES

EQUIPMENT RECOMMENDATIONS

Roller: 1/2" to 1 1/2" nap synthetic cover

Brush: 100% nylon or synthetic blend

Airless: Minimum 1 GPM airless with
3/8" hose and .025" tip, 2500-2900 PSI

SAFETY AND COMPLIANCE

VOC (EPA Method 24):

35 g/L 0.29 lbs./Gal

PRIMING RECOMMENDATIONS

New Work

Rough Masonry: Self-priming (requires two coats for maximum protection). Optional primer GRIPCRETE MASONRY SURFACER, 179.

Smooth Masonry: Self-priming (requires two coats).

Repaint Work

Repaint: Self-priming (requires two coats for maximum protection).

Note: May be applied over existing coatings only after sample applications have been made to check the sensitivity of the existing coating. Surfaces must be primed and properly prepared if sensitivity or lifting occurs.