



CLASSIC

**INTERIOR**

**BUILDER'S LEGACY**  
PRO SPATTER KOTE

**GREAT PAINT GREAT PEOPLE**

SINCE 1956  
**hallman  
lindsay**  
QUALITY PAINTS®

hallmanlindsay.com



# PRO SPATTER KOTE

SPATTER KOTE products are designed to provide a quality, multi-dimensional textured surface on new drywall and gypsum board walls and ceilings. Formulated to outperform bag-mix, these textures provide greater adhesion and durability. These premixed textures increase efficiency and texture consistency by eliminating on-site mixing and batch inconsistencies. Anti-microbial additives create a long pot life allowing material to be sealed and reused on multiple jobs reducing material waste and improving profitability.

PRO SPATTER KOTE can be used to achieve a variety of multi-dimensional textures including spatter, orange peel, knockdown and skip-trowel textures. These textures are formulated for professional spray application only. LEED v4 credit eligibility allows these products to be used on any commercial, residential, or institutional project looking to meet the strictest air quality standards.

## FEATURES

- Increased Efficiency
- Cost Saving Technology
- Lasting Durability
- Multi-Dimensional Textures
- Improved Finish Coat Performance
- LEED v4 Credit Eligible

## BENEFITS

### Cost-Saving Texture

Pre-mixed texture provides cost savings when factoring in labor savings and material waste. Increase efficiencies and convenience by eliminating the need for on-site mixing.

### Durable Texture Finish

Formulated with added latex to create a moisture-resistant texture that has better adhesion and more durability than powdered bag-mix. Texture does not reduce enamel holdout for improved finish coat performance.

### Endless Texture Options

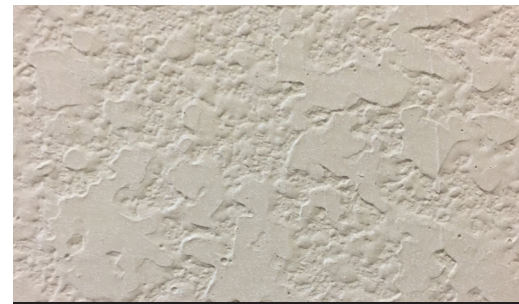
Using the proper SPATTER KOTE product can help achieve spatter, orange peel, knockdown, skip-trowel, and a variety of other textures.



LIGHT ORANGE PEEL



HEAVY ORANGE PEEL



KNOCKDOWN

## TECHNICAL INFORMATION

### APPLICATION INFORMATION

Drying Time at 77° F 50% R.H:

To touch: 1 to 24 hours\*

Recoat: 2-24 hours\*

\* Cooler temperatures, higher relative humidity, and increased wet film thickness will extend dry times.

Recommended Spreading Rate:

Apply up to 150 sq.ft. / Gal  
50-100 mils WFT; 20-42 DFT

Solids Content:

Volume: 41% ± 3 Weight: 64% ± 3

### BASES: SPATTER, KNOCKDOWN, & SKIP TROWEL - 370 SERIES

### EQUIPMENT RECOMMENDATIONS

Air Assisted Airless: 7 or 10 to 1 pump, Binks #7D gun, H series convertible nozzles, 16-20 cfm @ 150 PSI

Hopper Gun

Airless: Spray Tech 2510 with Zip-Tip Benron Texture Pump

### SAFETY AND COMPLIANCE

VOC (EPA Method 24):

<5 g/L 0.03 lbs./Gal

### PRIMING RECOMMENDATIONS

NOTE: For best results apply primer, primer/sealer, or surfacer prior to texture products for a more uniform appearance.

Advantage: Premium Level 5 Surfer, 371; Premium Wall Primer/Sealer, 220.

Classic: Professional Primer/Surfer, 367; Pro Wall Primer/Sealer, 227.

Performance: Hi-Build Vinyl Primer/Sealer, 350, Drywall Primer, 368.