



PERFORMANCE

INTERIOR

BUILDER'S LEGACY
CLASSIC SPATTER KOTE

GREAT PAINT GREAT PEOPLE

SINCE 1956
**hallman
lindsay**
QUALITY PAINTS®

hallmanlindsay.com

CLASSIC SPATTER KOTE

CLASSIC SPATTER KOTE products are designed to provide a quality, multi-dimensional textured surface on new drywall and gypsum board walls and ceilings. Formulated to outperform bag-mix, these textures provide greater adhesion and durability. These premixed textures increase efficiency and texture consistency by eliminating on-site mixing and batch inconsistencies. Anti-microbial additives create a long pot life allowing material to be sealed and reused on multiple jobs reducing material waste and improving profitability.

CLASSIC SPATTER KOTE products can be used to achieve a variety of multi-dimensional textures including spatter, orange peel, knockdown and skip-trowel textures. These textures are formulated for professional spray application only. LEED v4 certification allows these products to be used on any commercial, residential, or institutional project looking to meet the strictest air quality standards.

FEATURES

- Increased Efficiency
- Cost Saving Technology
- Lasting Durability
- Multi-Dimensional Textures
- Improved Finish Coat Performance
- LEED v4 Compliant

BENEFITS

Cost-Saving Texture

Pre-mixed texture provides cost savings when factoring in labor savings and material waste. Increase efficiencies and convenience by eliminating the need for on-site mixing.

Durable Texture Finish

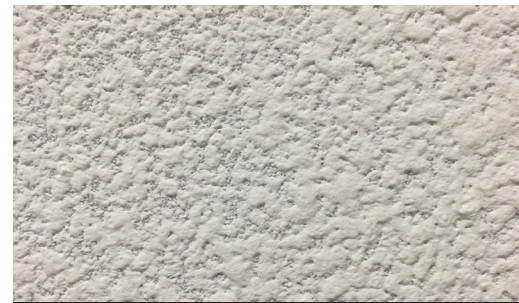
Formulated with added latex to create a moisture-resistant texture that has better adhesion and more durability than powdered bag-mix. Texture does not reduce enamel holdout for improved finish coat performance.

Endless Texture Options

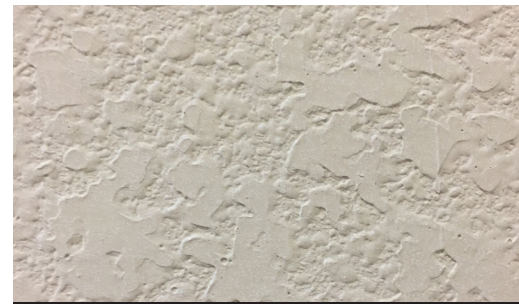
Using the proper SPATTER KOTE product can help achieve spatter, orange peel, knockdown, skip-trowel, and a variety of other textures.



LIGHT ORANGE PEEL



HEAVY ORANGE PEEL



KNOCKDOWN

TECHNICAL INFORMATION

APPLICATION INFORMATION

Drying Time at 77° F 50% R.H:

To touch: 1 to 24 hours*

Recoat: 2-24 hours*

* Cooler temperatures, higher relative humidity, and increased WFT will extend dry times.

Recommended Spreading Rate:

Apply up to 150 sq.ft. / Gal
50-100 mils WFT; 20-42 DFT

Solids Content:

Volume: 40% ± 3 Weight: 64% ± 3

BASES: SPATTER & ORANGE PEEL - 369 SERIES

EQUIPMENT RECOMMENDATIONS

Air Assisted Airless: 7 or 10 to 1 pump,
Binks #7D gun, H series convertible
nozzles, 16-20 cfm @ 150 PSI

Hopper Gun

Airless: Spray Tech 2510 with Zip-Tip
Benron Texture Pump

SAFETY AND COMPLIANCE

VOC (EPA Method 24):

<5 g/L 0.03 lbs./Gal

PRIMING RECOMMENDATIONS

NOTE: For best results apply primer, primer/sealer, or surfacer prior to texture products for a more uniform appearance.

Advantage: Premium Level 5 Surfer, 371; Premium Wall Primer/Sealer, 220.

Classic: Professional Primer/Surfacer, 367; Pro Wall Primer/Sealer, 227.

Performance: Hi-Build Vinyl Primer/Sealer, 350, Drywall Primer, 368.