

PROFESSIONAL  
**INTERIOR /  
EXTERIOR**

**METALGUARD**  
ZINC DUST PRIMER



Hallman Lindsay serves the communities where we live and work. We provide expertise and quality products made and mixed in Wisconsin for over 60 years.

**GREAT PAINT. GREAT PEOPLE.**

SINCE 1956  
**hallman  
lindsay**  
QUALITY PAINTS®



# METALGUARD PREMIUM ZINC DUST PRIMER

METALGUARD ZINC DUST PRIMERS are high performance primers formulated to provide maximum protection on metal surfaces. When applied properly, zinc-rich primers help form a durable, protective coating to extend the service life of metal surfaces. These single-component organic zinc primers require no mixing for easy field and maintenance application. Designed for use with architectural and light industrial acrylic coatings, or left as a finish to produce a weathered galvanized appearance.

METALGUARD PREMIUM ZINC DUST PRIMER is designed for exterior application on surfaces needing added corrosion resistance. These Type II zinc primers are formulated specifically for high-heat exposure making them great for exterior metal surfaces including siding, metal roofs, and structural steel. Optional low-solids version available for areas with minimal corrosion or needing less protection.

## FEATURES

- Strong Corrosion Resistance
- Zinc-Rich Formulation
- Excellent Adhesion
- Optional Finish Coat

## BENEFITS

### Excellent Corrosion Resistance

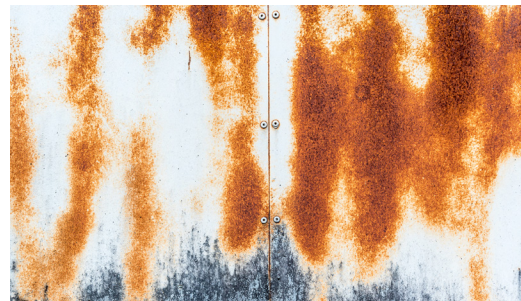
Zinc-Rich formulation provides a passivation barrier for corrosion protection to extend the life of metal surfaces.

### Superior Priming Features

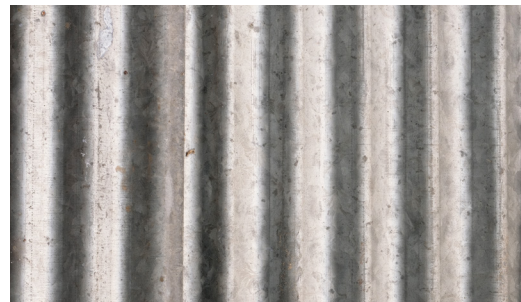
Excellent adhesion allows for application to previously painted surfaces and tightly adhered rusty surfaces.

### Optional Finish Coat

As a unique primer/finish, if left unfinished it will produce a weathered galvanized appearance that does not require a finish coat.



Apply to Rusty Surfaces



Creates Weather Galvanized Appearance

## TECHNICAL INFORMATION

### APPLICATION INFORMATION

Drying Time at 77° F 50% R.H:

To Touch: 4 hours\*

Recoat: Overnight\*

\* Cooler temperatures and higher relative humidity will extend dry times

Recommended Spreading Rate:

400 sq.ft./Gal to achieve

4.0 mils Wet Film Thickness

2.2 mils Dry Film Thickness

Solids Content:

Volume: 56% ± 2 Weight: 82% ± 2

**BASES: PREMIUM GREY - 334 SERIES • PRODUCTION GREY - 335 SERIES**

### EQUIPMENT RECOMMENDATIONS

Roller: 1/4" – 1/2" shed-resistant cover or lambswool cover

Brush: Natural china bristle or synthetic blend

Airless: Minimum ¾ GPM with .019" tip @ 2500-2900 PSI

HVLP: Twin-stage turbine, 5 – 8 PSI, .051 to .070 projector set

### SAFETY AND COMPLIANCE

VOC (EPA Method 24):

341 g/L 2.85 lbs./Gal

Federal Paint Specification:

TT-P-641 G Type II

### FINISHING RECOMMENDATIONS

Interior

High-Performance Acrylic: Duratech, Aqua Pox 1, Multi-Surface Acrylic Series

Professional Finish: Pro Kote Series.

Weathered Galvanized: Self-priming finish.

Exterior

High-Performance Acrylic: Duratech Series.

Designer Finish: Generation Series.

Premium Finish: Weatherguard Series; Metal Kote, 178.

Professional Finish: Dura Kote Series.

Weathered Galvanized: Self-priming finish.

Agricultural Finishes: Farm & Ranch Series.