

A close-up photograph of a person's hand holding a spray gun, applying a dark paint to a metal railing. The railing has a corrugated or ribbed texture. The background is slightly blurred, showing green foliage and a dirt path.

PROFESSIONAL
**INTERIOR /
EXTERIOR**

METALGUARD
DTM ACRYLIC PRIMER/FINISH

Hallman Lindsay serves the communities where we live and work. We provide expertise and quality products made and mixed in Wisconsin for over 60 years.

GREAT PAINT. GREAT PEOPLE.

**hallman
lindsay**
QUALITY PAINTS®

METALGUARD DTM ACRYLIC PRIMER/FINISH

METALGUARD DTM ACRYLIC PRIMER/FINISH is a waterborne coating designed to provide corrosion resistance in commercial and light industrial applications. Formulated for adhesion to a variety of surfaces, it forms a tight, flash rust resistant bond to clean steel. Streamlined product mixes by using this single-source product to prime and finish prepared steel, galvanized, and factory-primed surfaces.

METALGUARD DTM ACRYLIC is formulated for professional application on commercial, light industrial, and maintenance projects. This versatile coating can be applied to hand rails, metal doors and frames, trim, steel supports, galvanized duct work, metal siding, and many other surfaces. It can be topcoated with a variety of coatings or left as a satin finish coat on interior or exterior surfaces.

FEATURES

- Direct to Metal Acrylic
- Excellent Adhesion and Durability
- Single-Source Primer/Finish
- Low Odor, Low-VOC

BENEFITS

Prime & Finish

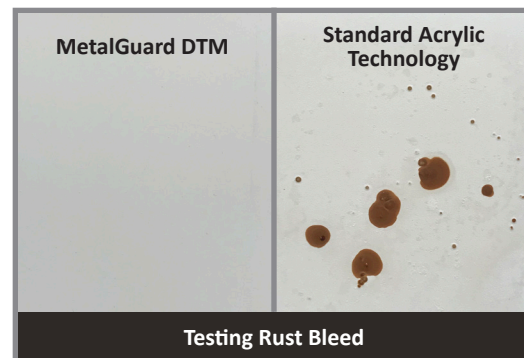
Priming and finishing with the same product can reduce the number of overall coats needed to complete projects saving on labor and material costs.

Rust-Inhibitive Finish

Added rust-inhibitors block flash rust allowing this waterborne coating to be applied directly to clean metal surfaces.

Low Odor Formula

Low odor waterborne formula minimizes the impact on other trades and personnel in occupied spaces.



TECHNICAL INFORMATION

APPLICATION INFORMATION

Drying Time at 77° F 50% R.H:

To Touch: 40 minutes*

Recoat: 1 hour*

* Cooler temperatures and higher relative humidity will extend dry times

Recommended Spreading Rate:

300-350 sq. ft./gal to achieve

1.7-5.3 mils Wet Film Thickness

1.7-1.9 mils Dry Film Thickness

Solids Content:

Volume: 38% ± 2 Weight: 48% ± 2

BASES: SATIN - 338 SERIES

EQUIPMENT RECOMMENDATIONS

Roller: 1/4" – 1/2" nap shed-resistant cover or lambswool cover

Brush: 100% nylon or synthetic blend

Airless: Minimum 3/4 GPM with .015" tip @ 2300-2700 PSI

HVLP: Twin-stage turbine, 5 – 8 PSI, .051 to .070 projector set

SAFETY AND COMPLIANCE

VOC (EPA Method 24):

165 g/L 1.38 lbs./Gal

MPI Category:

134

FINISHING RECOMMENDATIONS

Interior

Latex Finishes: Compatible with all Hallman Lindsay waterborne interior finishes.

Alkyd Finishes: Duraguard Series.

Exterior

Latex Finishes: Compatible with all Hallman Lindsay waterborne interior finishes.

Alkyd Finishes: Duraguard Series.