



PROFESSIONAL
EXTERIOR

DURAKOTE

Hallman Lindsay serves the communities where we live and work. We provide expertise and quality products made and mixed in Wisconsin for over 60 years.

GREAT PAINT. GREAT PEOPLE.

**hallman
lindsay**
QUALITY PAINTS®

hallmanlindsay.com

DURAKOTE

DURAKOTE is a 100% acrylic exterior coating designed to meet the specific needs of professionals. Formulated with Dew-Shield Technology, this performance-grade finish is resistant to early moisture in as little as one hour helping to protect from bubbling, sagging, and surfactant leaching. Easy brush, roll, or spray application reduces time on the job. Low-temperature application with moisture tolerant technology results in less weather delays helping to extend your painting season.

When timing matters most, DURAKOTE is the professional coating of choice for repaint and new construction projects. Formulated with flash-rust and efflorescence blockers, it is ideal for projects involving tilt-up masonry, wood, metal siding, and other prepared surfaces.

FEATURES

- Early Moisture Resistance
- Flash-Rust Inhibitive
- Excellent Resistance to Dirt Build-Up
- Mold & Mildew Resistant

BENEFITS

Dew-Shield Technology

Early moisture resistance helps to keep projects on time and on budget by avoiding delays and costly call-backs.

Efflorescence Resistant

Proprietary formulation blocks efflorescence on masonry surfaces making this product great for tilt-up, stucco and other cementitious substrates.

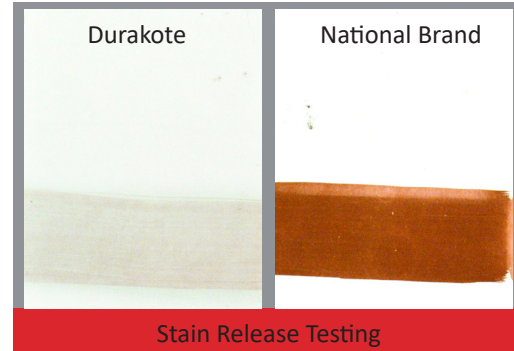
Cold Temperature Application

Formulated in Wisconsin for Wisconsin. Cooler temps will not slow you down. Low-temperature rated for application down to 35 degrees.



Durakote

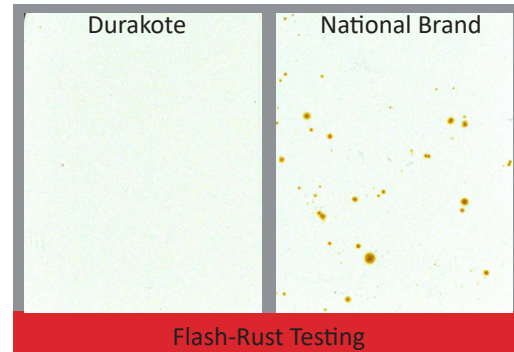
National Brand



Stain Release Testing

Durakote

National Brand



Flash-Rust Testing

TECHNICAL INFORMATION

BASES: LO-SHEEN - 170 SERIES • FLAT - 171 SERIES

APPLICATION INFORMATION

Drying Time at 77° F 50% R.H.:

To Touch: 2 Hours*

Recoat: 4 Hours*

* Cooler temperatures and higher relative humidity will extend dry times

Recommended Spreading Rate:

Apply at 400 sq.ft./Gal to achieve 4.0 mils
Wet Film Thickness 1.3 Dry Film Thickness

Volume Solids:

Volume: 33% ± 2 Weight: 45% ± 2

EQUIPMENT RECOMMENDATIONS

Roller: 1/2" to 1" nap synthetic cover

Brush: 100% nylon or synthetic blend

Airless: Minimum 2500 psi with .017" tip

HVLP: Not recommended

SAFETY AND COMPLIANCE

VOC (EPA Method 24):

102 g/L 0.85 lbs./Gal

MPI Category:

10 and 15

PRIMER RECOMMENDATIONS

Aluminum Siding: Self Priming

Galvanized Metal: Metalguard DTM Acrylic Primer/Finish, 338.

Steel: Metalguard Rust Inhibitive Primer, 330.

CMU, Concrete Block and Split Face: Grip-Crete HD Block Filler, 181.

Masonry/Stucco: Self Priming or Grip-Crete Masonry/Plaster Primer, 166.

Wood Surfaces: Prime Kote, 111 for Cedar and Redwood. All other species Prime Guard, 112.